



# CPD CERTIFIED FACADES SEMINAR SERIES 2018

(A –Class) Fire Rated Façade watherproofing



# (A –Class) Fire Rated Façade watherproofing

# INTRO



# INTRO



No hard feelings Ronaldo, but for this time, we need to talk business!!

# Fire & Water



FACADE WATER



FACADE FIRE

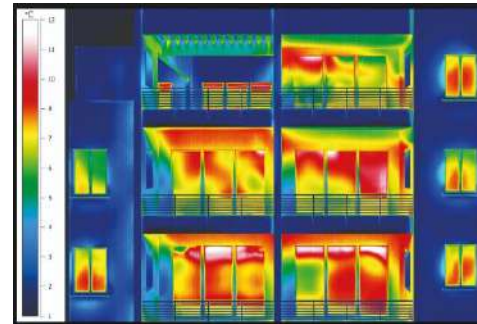
A photograph showing a man and a woman looking up at a ceiling. A hole in the ceiling is leaking water, which is dripping down. The man is reaching up towards the hole. The woman is looking up at the man. The background is a plain, light-colored wall.

# Facade Water Protection

# Facade Water Protection

WHY TO  
DO IT?

- BUILDINGS INTEGRITY
- BUILDING LIFE EXPECTANCY => ROI = PROTECT INVESTMENTS
- INTERIOR AIR QUALITY
- AVOID CONDENSATION RISKS
- IMPROVE BUILDING EFFICIENCY
- REDUCES OUR ECOLOGICAL FOOTPRINT



# Facade Water Protection

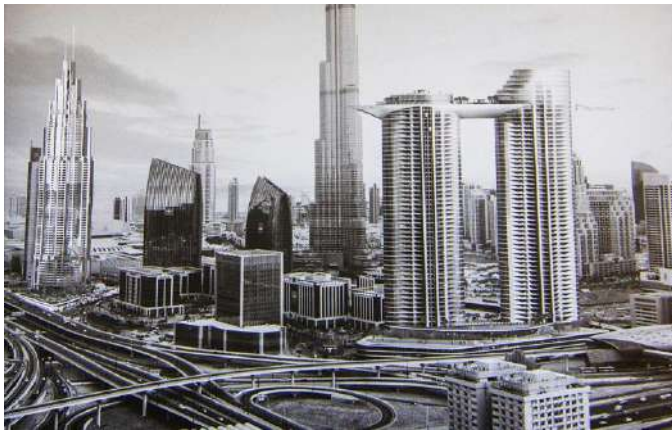
Work  
Being  
Done



Sparkle Towers



Fountain  
View



SkyViews



The One JBR



Not an  
option!

**We all must agree!!**

**Protecting our buildings  
against water and other  
natural elements**

**is not really an option!**

A tall skyscraper with a fire and smoke rising from its facade, overlaid with the text 'FACADE FIRE PROTECTION'. The image is a composite of two photos: the top part shows a modern skyscraper with a large fire and thick black smoke billowing from its facade, while the bottom part shows a lower, older building with a fire on its roof. The text is in large, white, bold, sans-serif capital letters, with a vertical white line to the left of the words 'FIRE' and 'PROTECTION'.

# FACADE FIRE PROTECTION N

# FACADE FIRE PROTECTION

- HUMAN LIFE PROTECTION
- BUILDINGS INTEGRITY
- ROI
- TIME

WHY TO  
DO IT?



## The ideal Solution!

- NON-COMBUSTABLE WATERPROOFING MATERIALS
- STOP / DELAY FIRE PROPAGATION
- STOP SMALL FIRE INCIDENTS

**Non-Combustable!**  
**Is it really realistic?**



An aerial view of the Dubai skyline at dusk. The Burj Khalifa is the most prominent feature on the left, its spire reaching towards the top of the frame. Other skyscrapers, including the BurjDubai and the BurjDubai 2, are visible in the center. The city lights are beginning to glow, and the sky is a mix of purple and blue. The text 'UAE MARKET' is overlaid in the center-right of the image.

# UAE MARKET

# THE UAE MARKET

- MARKET DEMANDS A TECHNOLOGY BREAKTHROUGH
- KEY INVOLVED STAKEHOLDERS AWARENESS
- STRICT CODES AND APPROVALS = CLASS A REQUIRED!

**Are there solutions  
available? Not until now!**



# What would you need?

	A	B	C
ASTM E84	✓		

	A	B	C	D	E
EN 13501	✓				

**We need better than “good enough” solutions!**

**You need “A-Class” solutions!**

**We need non-combustable solutions!**



# THE UAE MARKET

**You are witnessing a market  
breakthrough!**





A hand is shown on the left side of the frame, holding a vertical white line. The background is a dark, smoky grey with a faint, glowing pattern of yellow and orange flames or smoke. The text is overlaid on the right side of the image.

**A-CLASS FIRE  
RATED  
WATERPROOFING  
MEMBRANES!**

**MARKET  
BREAKTHROUGH**

# A-CLASS Waterproofing Membrane

**EFFISUS**  
EFFICIENT  
SUSTAINABILITY



- **Non-Combustable - Class A**
- **Water tight**
- **Wind & Air tight**
- **Optimum UV Resistance**



# Your project in good hands

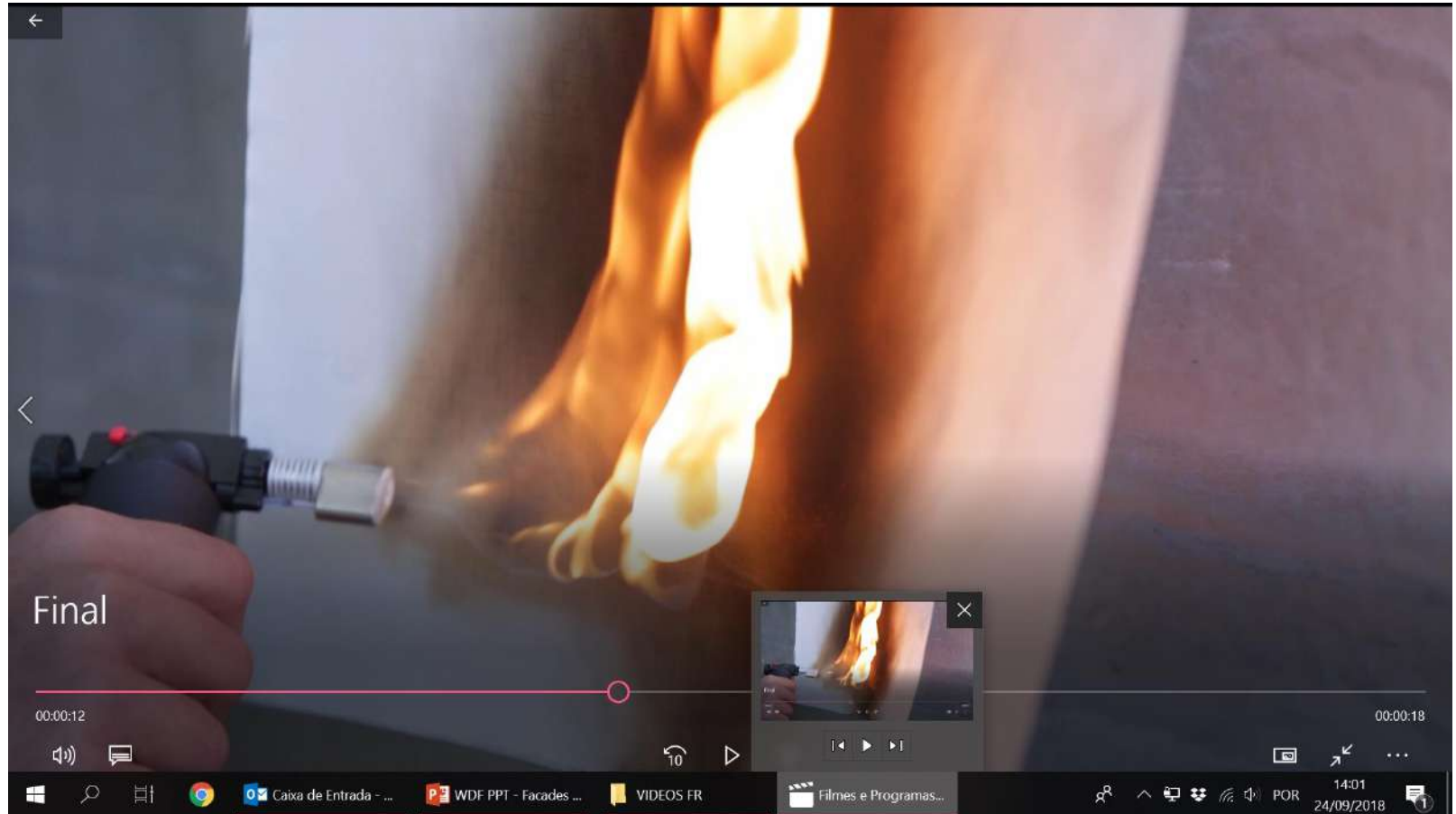
**CERTIFICATIONS:**  
Under the UAE Fire and Life Safety Code of Practice

	A	B	C
ASTM E84	✓		

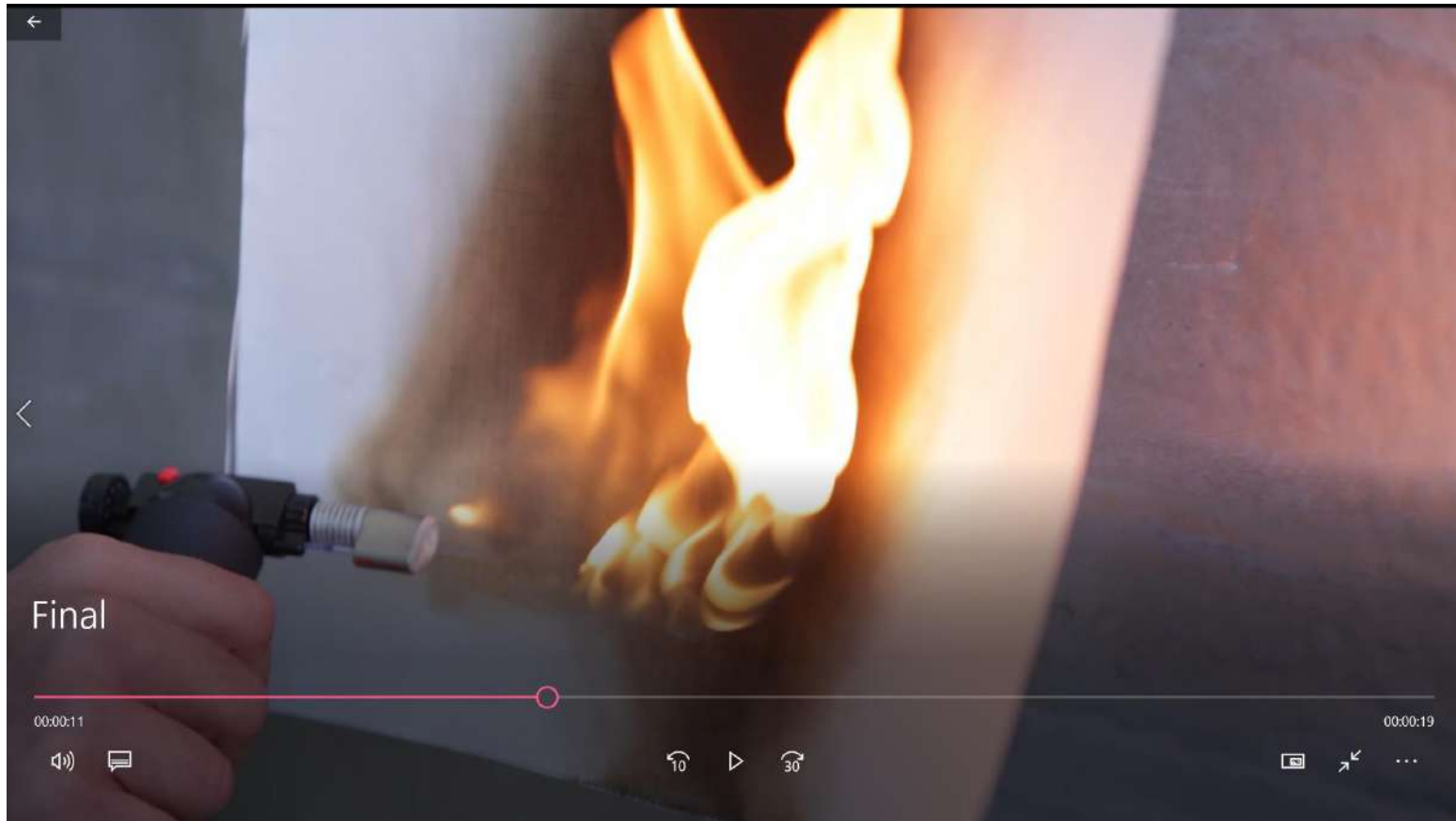
	A	B	C	D	E
EN 13501	✓				



# A-CLASS Waterproofing Membrane



# A-CLASS Waterproofing Membrane



**Thank you!**

**Any question that I can help with?**

**Additional info @**

**[www.facadefire.co](http://www.facadefire.com)**

**[m](mailto:)**

**[www.effisus.com](http://www.effisus.com)**



## PEDRO CARVALHO

Strategy & Business Development Director

Effisus – Excellence in façade weatherproofing

Portugal





THANK YOU FOR ATTENDING  
THIS PRESENTATION

